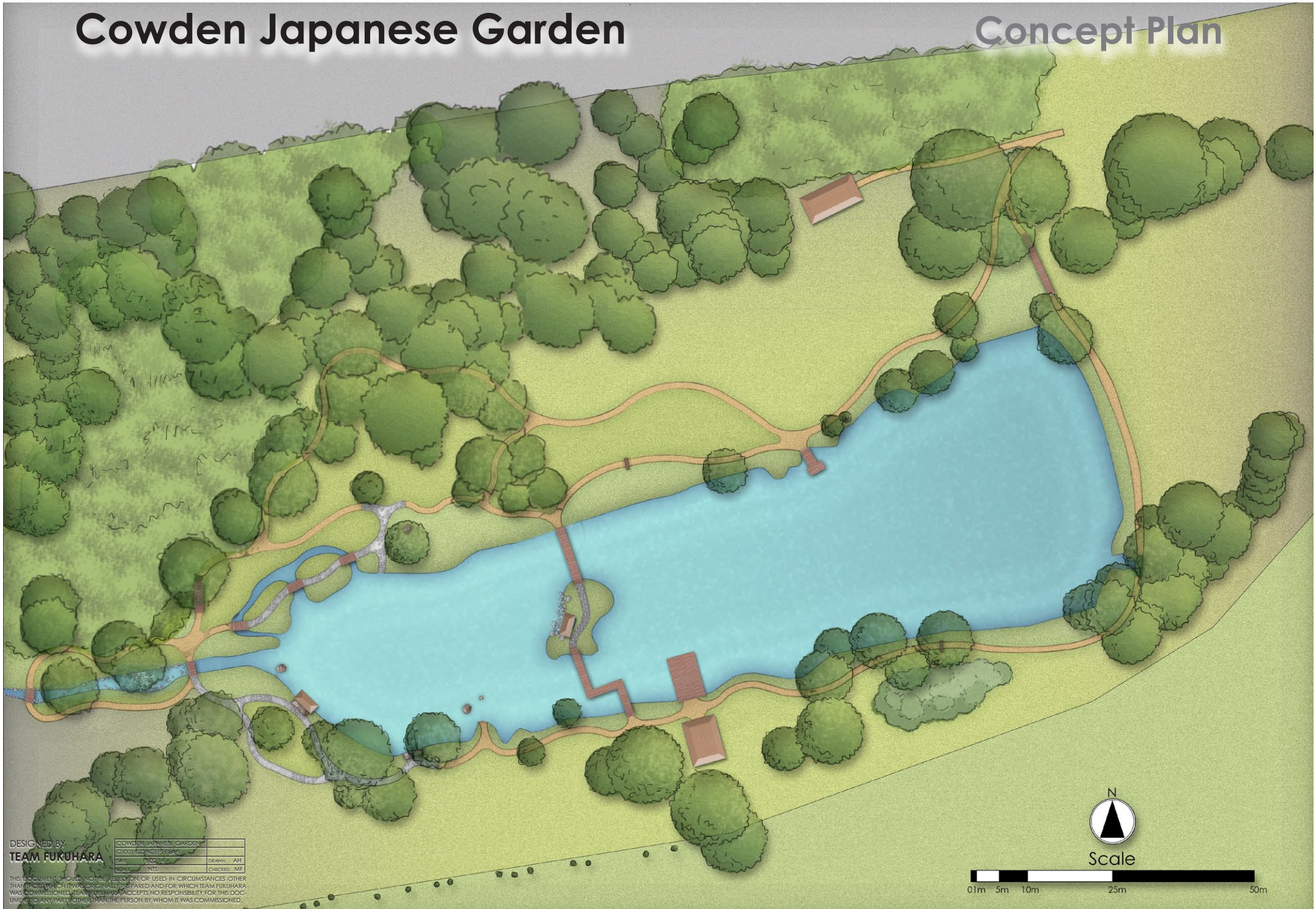


Cowden Japanese Garden

Concept Plan



DESIGNED BY
TEAM FUKUHARA

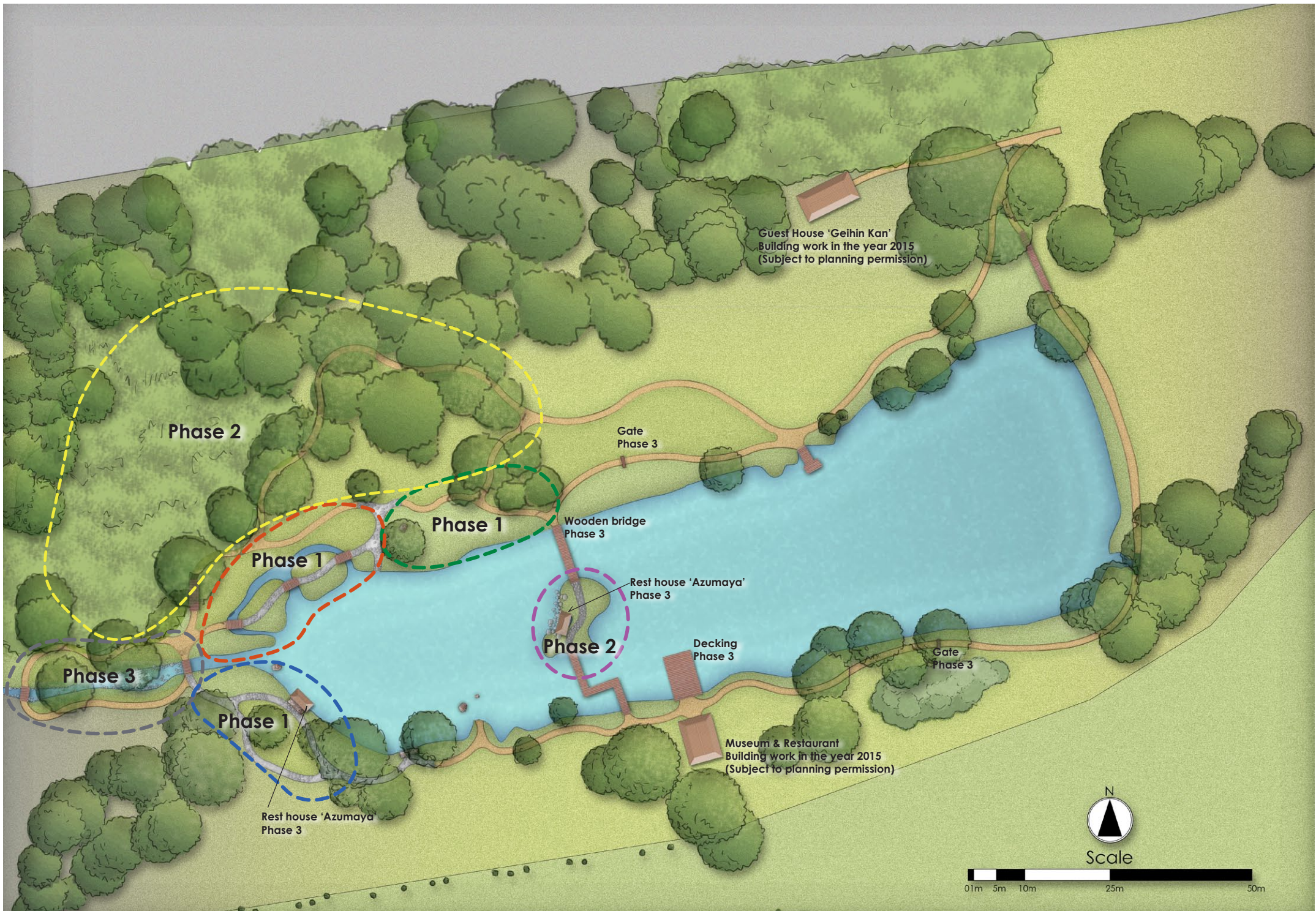
COWDEN JAPANESE GARDEN	
CLIENT	CONCEPT PLAN
DATE	13/02/14
DRAWN	AHT
CHECKED	ME

THIS DOCUMENT SHOULD NOT BE RELIED ON OR USED IN CIRCUMSTANCES OTHER THAN THOSE WHICH IT WAS ORIGINALLY PREPARED AND FOR WHICH TEAM FUKUHARA WAS COMMISSIONED. TEAM FUKUHARA ACCEPTS NO RESPONSIBILITY FOR THIS DOCUMENT TO ANY PARTY OTHER THAN THE PERSON BY WHOM IT WAS COMMISSIONED.



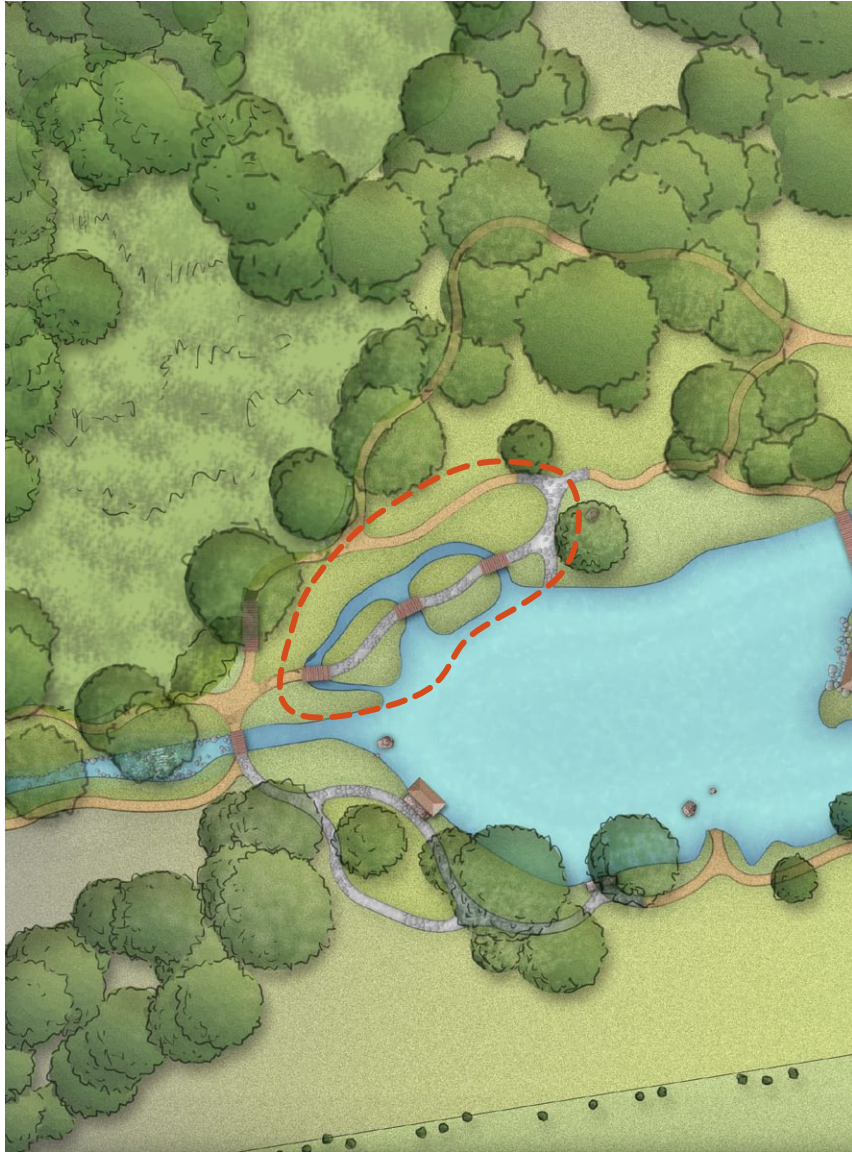
Scale





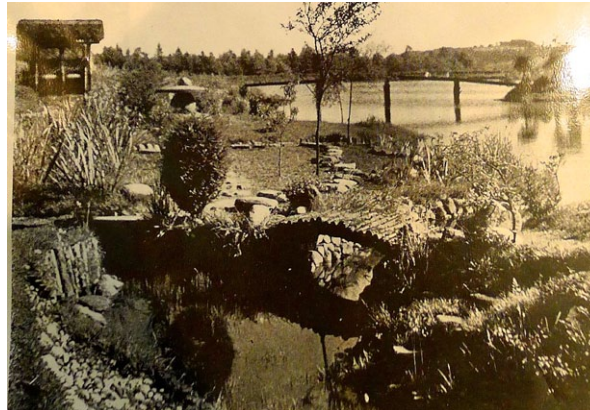
Phase 1 Project

Restoration of the islands designed by Taki Handa on the west side



1. Restoration of the islands to the west

- Revetments on the banks
- Restoration of stone arrangements
- Restoration of pathways
- Restoration of wooden bridge
- Structural pruning



Wooden bridge on the islands



A photo taken at same location



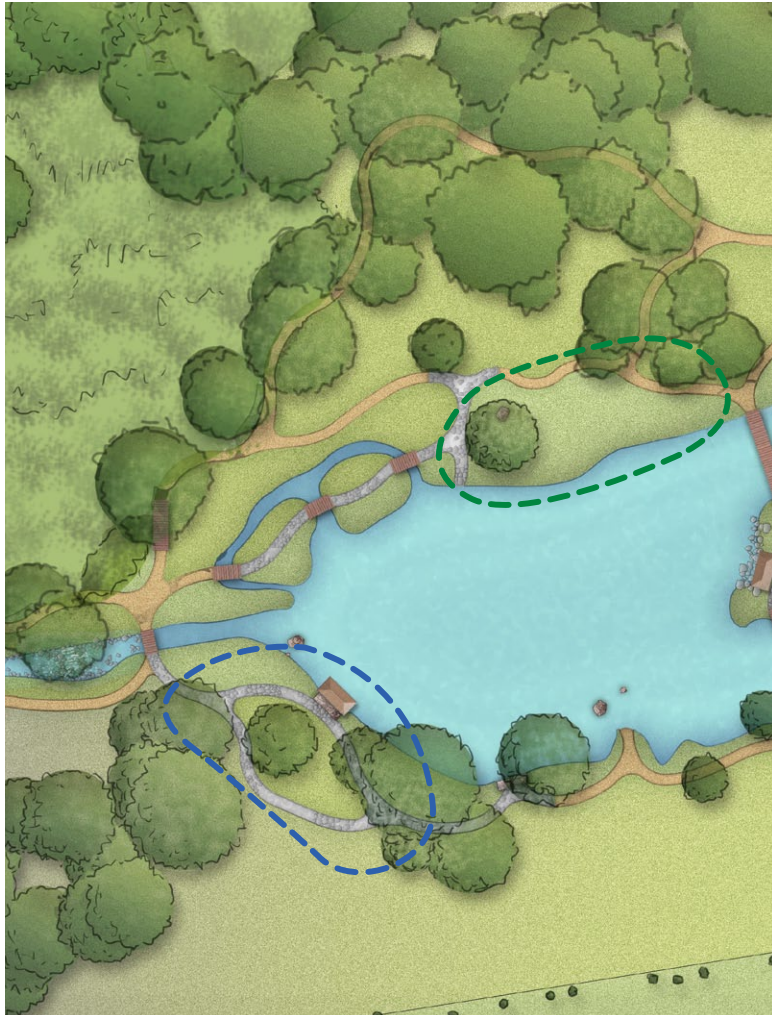
Ella Christie at a headland in 1933



A photo taken at same location

Phase 1 Project

Restoration of the flat garden on the north, designed by Taki Handa and the flat garden on the south designed by Jiju Suzuki



2. Restoration of the flat garden on the north

- Restoration of Yose lantern
- Restoration of stepping stone pathways

3. Restoration of the flat garden on the south west designed by Jiju Suzuki

- Restoration of stone lantern
- Restoration of stepping stones
- Reinstatement of Mizubachi (water basin)



Mr Matsuo at the flat garden in 1926



Current photo taken at same location



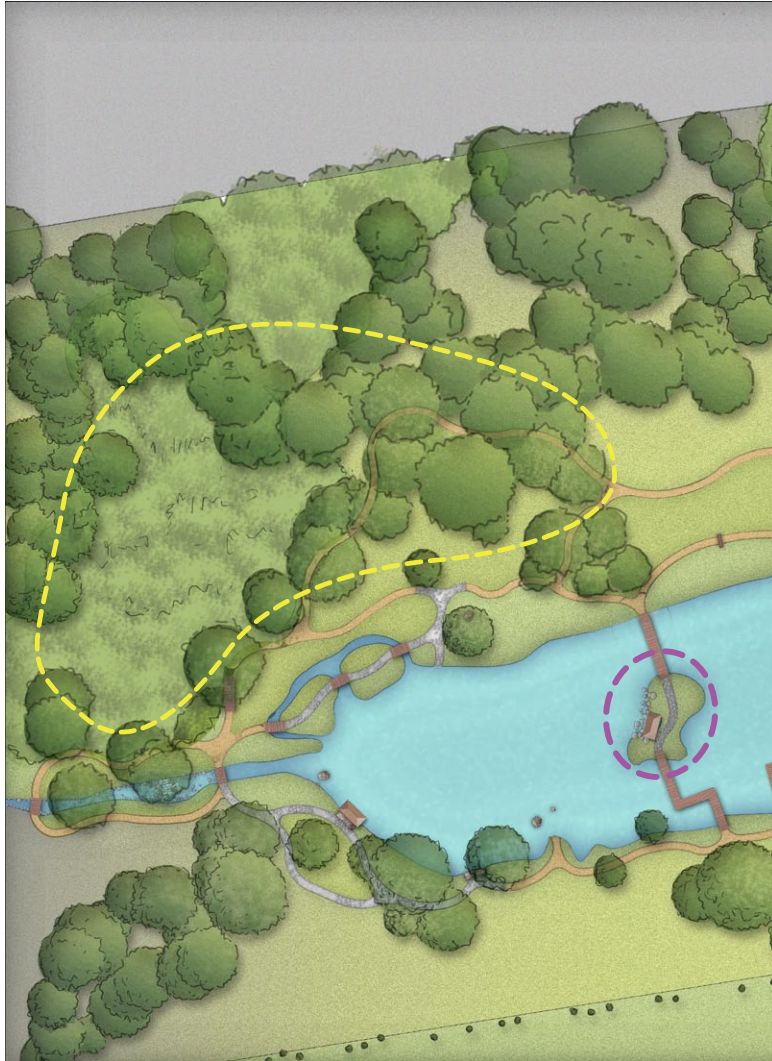
Stone lantern



Current photo taken at same location

Phase 2 Project

Restoration of Fuji slope designed by Taki Handa and restoration of the central island designed by Ella Christie



1. Restoration of the miniature hills on the Fuji slopes

- Restoration and reshaping mounds
- Structural pruning

2. Restoration of the central island

- Revetments on the banks,
- Restoration of stone arrangements,
- Reinstatement of Mizubachi (water basin)
- Restoration of pathways



Fuji slope in 1931



Current Fuji slope



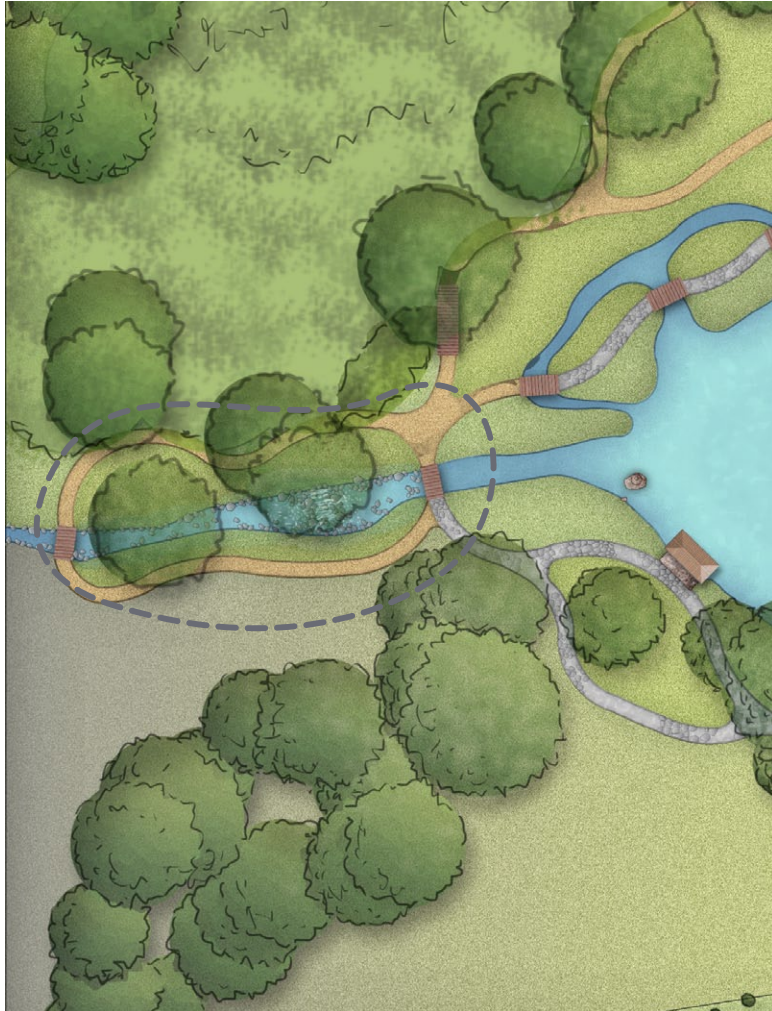
Zig zag bridge and central island in 1955



Current photo taken at same location

Phase 3 Project

Restoration of the small stream and Waterfall designed by Taki Handa and Restoration of all structures, pathways and planting



1. Restoration of small stream and waterfall

- Restoration of the stone arrangements and bridge
- Restoration of stepping stones, and pathways
- Restoration of small waterfall

2. Restoration of all the structures

- Restoration of Azumaya (Rest House)
- Restoration of arched wooden bridge
- Restoration of gates
- Installation of wooden deck

3. Restoration of pathways and whole planting



Current stream with small waterfall



Current stream with stone works



Azumaya (Rest house)



A photo taken at same location