

Cowden Japanese Garden

Concept Plan

Fuji slope & Miniature hills

Restoration of miniature hills on Fuji sloping area designed by Taki Handa on the west side.

- Restoration of miniature hills
- Structural pruning
- Planting



Fuji slope in 1931



Current Fuji slope

Streams

Restoration of small stream and waterfall

- Restoration of the stone arrangements and bridge
- Restoration of stepping stones, and pathways



Current stream with small waterfall

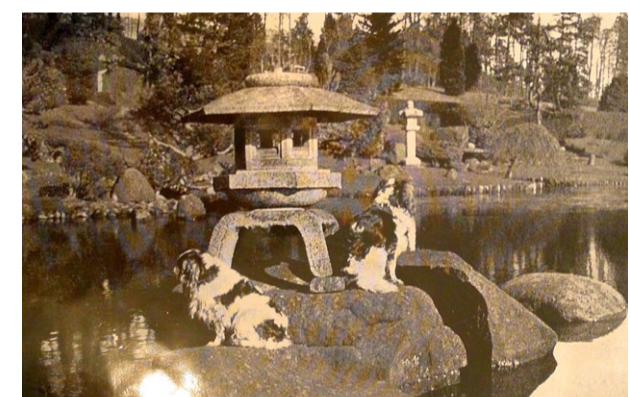


Current stream with stone works

Southwest flat garden

Restoration of the flat garden on the west side designed and modified by Jiju Suzuki.

- Restoration of the stone arrangements, stepping stones, and pathways
- Reinstatement of Mizubachi (water basin)
- Restoration of stone lanterns
- Restoration of Azumaya (as work in Phase 3)



Stone lantern



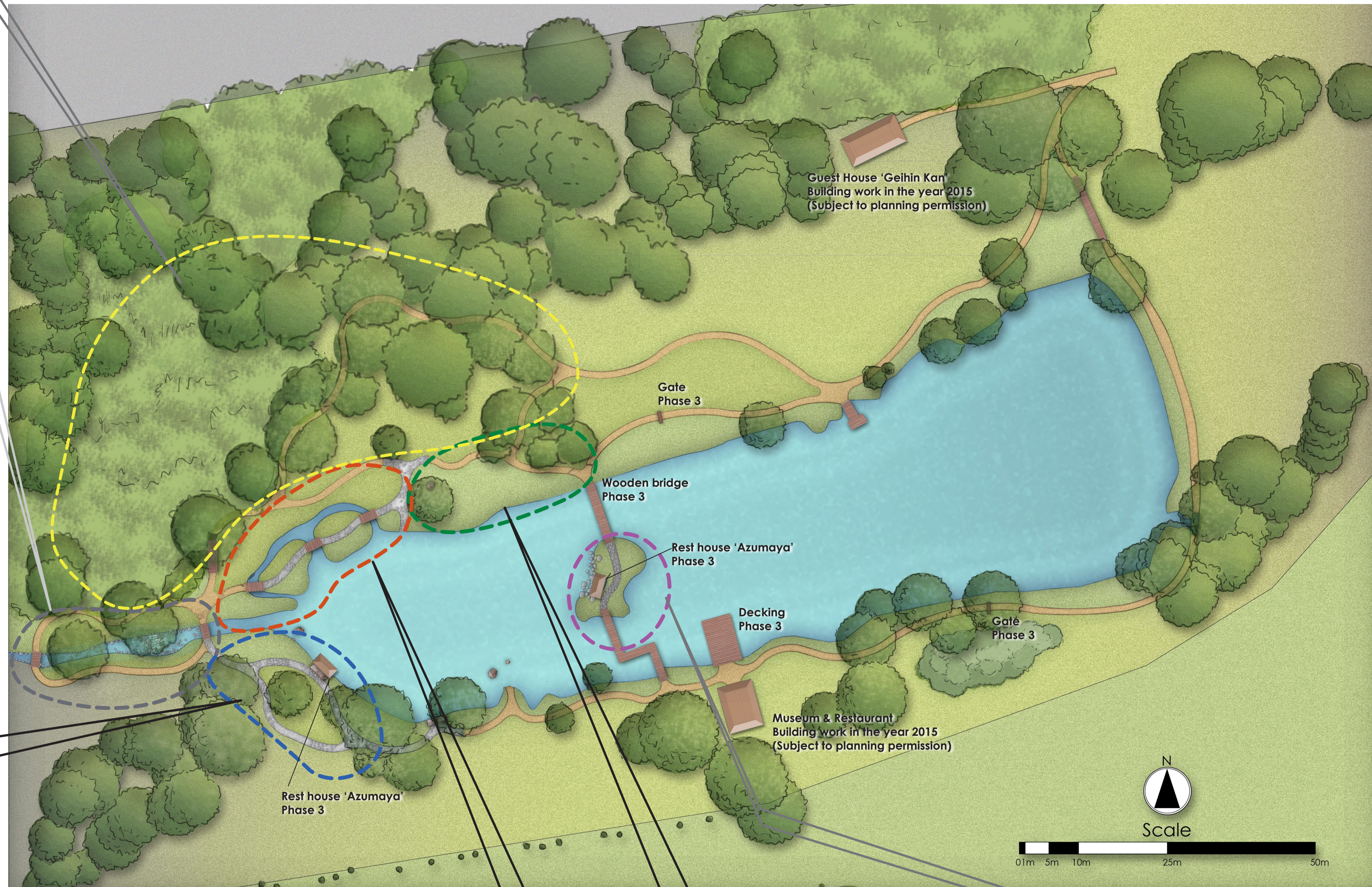
A photo taken at same location



Azumaya (Rest house)



A photo taken at same location



PHASE 1 PROJECT (FROM AUGUST 2014)

PHASE 2 PROJECT (FROM OCTOBER 2014)

PHASE 3 PROJECT (FROM YEAR 2015)

DESIGNED BY
TEAM FUKUHARA

COWDEN JAPANESE GARDEN		
CJ001 CONCEPT PLAN		
DATE	15.02.14	DRAWN AH
SCALE	NTS	CHECKED MF

THIS DOCUMENT SHOULD NOT BE RELIED ON OR USED IN CIRCUMSTANCES OTHER THAN THOSE WHICH IT WAS ORIGINALLY PREPARED AND FOR WHICH TEAM FUKUHARA WAS COMMISSIONED. TEAM FUKUHARA ACCEPTS NO RESPONSIBILITY FOR THIS DOCUMENT TO ANY PARTY OTHER THAN THE PERSON BY WHOM IT WAS COMMISSIONED.

West islands

Restoration of the islands designed by Taki Handa to the west.

- Revetments on the banks
- Restoration of stone arrangements and pathways
- Restoration of wooden bridge
- Planting (as work in Phase 3)



Wooden bridge on the islands



A photo taken at same location



Ella Christie at a headland in 1933



A photo taken at same location

Northwest flat garden

Restoration of the flat garden designed by Taki Handa on the northwest side.

- Reinstatement of Yose lantern, stone lantern
- Restoration of stepping stone pathways
- Planting (as work in Phase 3)



Mr Matsuo at the flat garden in 1926



A photo taken at same location

Central island

Restoration of the central island designed by Ella Christie.

- Revetments on the banks, stone arrangements
- Reinstatement of Mizubachi (water basin)
- Restoration of wooden arched bridge (as work in Phase 3)
- Restoration of Azumaya (as work in Phase 3)
- Planting (as work in Phase 3)



Zig zag bridge and central island in 1955



A photo taken at same location